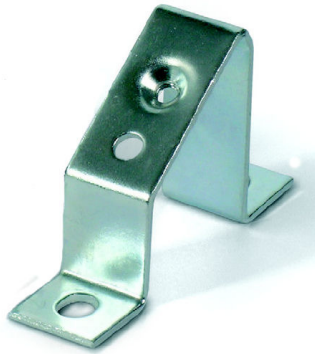


DIN Mounting Rail



ACI121314

Order Code	Description	Pack Qty
DIN Mounting Rail		
PR/3/AC	35mm x 7.5mm 'Top Hat' Rail	40m
PR/3/AS	35mm x 7.5mm 'Top Hat' Rail (Slotted 6.3 x 18mm)	40m
PR/3/PP	35mm x 15mm 'Top Hat' Rail	20m
PR/3/PA	35mm x 15mm 'Top Hat' Rail (Slotted 6.3 x 18mm)	20m
PR/DIN/AC	32mm 'G' Rail	20m
PR/DIN/AS	32mm 'G' Rail (Slotted 6.3 x 18mm)	20m

Order Code	Description	Pack Qty
Mounting Brackets for DIN Rail		
ACI121213	Straight Mounting Bracket	20
ACI121314	Angled Mounting Bracket	20

General Characteristics

DIN mounting rails for Cabur terminal blocks

- Available in DIN standard 15mm & 35mm 'Top Hat' and also 32mm 'G' section dimensions
- 'CR6-Free' RoHS Compliant
- Supplied in 2m lengths
- Choice of straight or inclined mounting brackets to suit
- 6mm diameter slot

